

GOLF Cart Lithium Battery

Li-GOLF 51-210

Strong Expansibility

Support 16 modules in parallel

Meticulous Care

Each module can be independently managed and operated to ensure the safety of the system

Easy Management

Pulley bottom, manual switch, and visual supervision interface

Stronger Compatibility

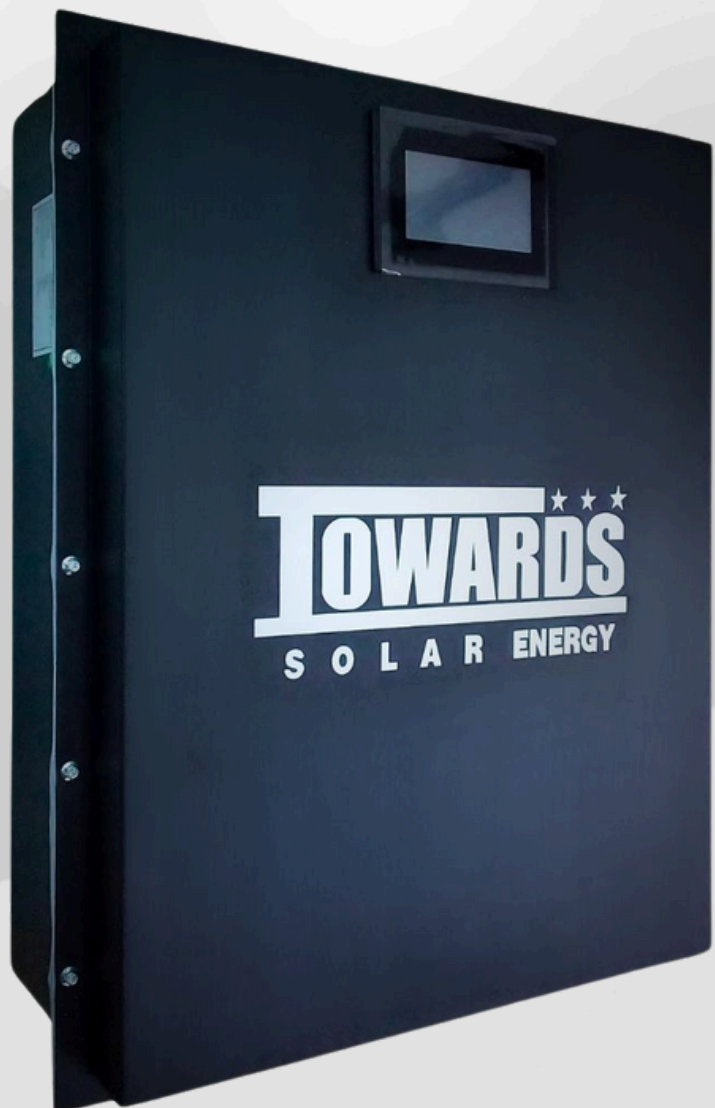
Cover all mainstream protocols and match most mainstream inverters
1C discharge

Long Life

4 times long static and 8 consistency screening make the battery more durable

Safety & reliability

Nano-coating and self-healing technology construct the LFP channel to add a firewall to the battery



Specifications

Nominal voltage		51.2 V
Nominal capacity		210 A
Dimensions	Length	24.5 cm
	Width	45 cm
	Height	60 cm
	Total height	65 cm
Approx. weight		≤90 Kgs

• Approx. weight of wooden package : 14kg/PCS

Specifications

Electrical Parameters (25°C)	Rated Voltage	51.2 V
	Rated Capacity (Cs)	210 A
	Energy	10.7 Kw
	Months Self Discharge	<3%
	Charge Efficiency	80% @ 0.2C
	Discharge Efficiency	96-99% @ 1C
	Terminal Diameter	M8
Internal resistance (Fully charged, 25°C)		≤50m ohms
Cycle life		4000 cycles @ 0.2C 100%D.O.D
Capacity affected by temperature	40°C	101%
	25°C	100%
	0°C	90%
	-10°C	75%
Nominal operating temperature		25°C± 3°C (77°F± 5°F)
Operating temperature range	Discharge	- 20°C~ 60°C (-4°F ~ 140°F)
	Charge	0°C~ 45°C (32°F ~ 113°F)
	Storage	0°C~ 40°C (32°F ~ 104°F)
Water Dust Resistance		IP50
Charge Voltage		58.4 +-0.5V
Standard Charge Mode (25°C±2°C, <75%RH)		0.2C A Constant Current to 57V, then Constant Voltage 57V , until the current drops to 0.02CA, before use, rest 30 minutes
Charge Current		50 A
Charge Cut off Voltage		Nominal operating temperature
Continuous Discharge Current		100 A
Maximum Pulse Current		150A (<1S)
Discharge Cut Off Voltage		58.4 V
Communicate Protocol (optional)		RS485/RS232/CAN
SOC (optional)		Screen/LED/PC Software
Application connection		1 string 1 parallel
Mechanical	Cells	16 Strings

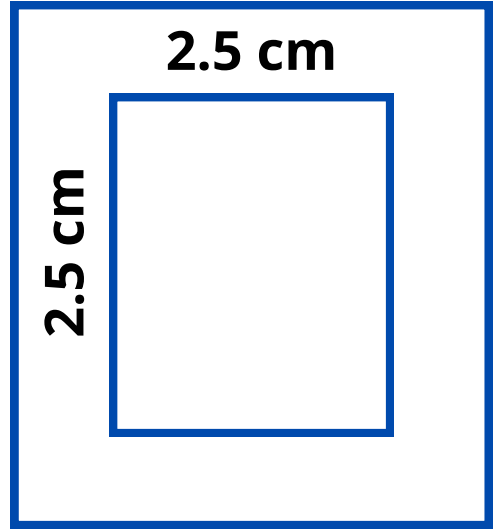


60 cm

24.5 cm

45 cm

TOWARDS
S O L A R ENERGY



2.5 cm

2.5 cm